

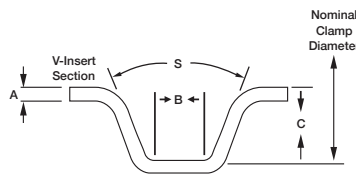
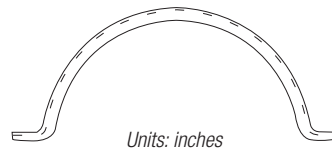
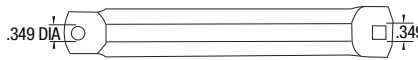
# V-Clamp Halves



Two separate V-retainers with two bolts, develops a more uniform clamping load than a single bolt clamp.

**Weld-Free Construction** | Diameter Range 2.51" – 6.12"

- V-CLAMP HALVES**
- #10, 1.4", 5/16" 3/8" Fasteners
- 300-Series SS Insert
- 410 Stainless Steel Hardware



| V-CLAMP HALVES |                 | Nominal Diameter |       | Installation Torque | Insert Angle (S) | Insert Thickness (A) |           | Insert Apex Width (B) |       | Insert Depth (C) |       |
|----------------|-----------------|------------------|-------|---------------------|------------------|----------------------|-----------|-----------------------|-------|------------------|-------|
| Brand PN       | Global PN       | in               | mm    |                     |                  | in                   | mm        | in                    | mm    | in               | mm    |
| 002081         | 0373 0701 064   | 2.51             | 63.8  | 40 in.-lb.          | 42°              | 0.081/0.073          | 2.06/1.85 | 0.412                 | 10.46 | 0.235            | 5.97  |
| 002081-001     | 0373 0701 100   | 3.93             | 99.8  | 40 in.-lb.          | 42°              | 0.081/0.073          | 2.06/1.85 | 0.412                 | 10.46 | 0.235            | 5.97  |
| 002104*        | 0373 0702 070*  | 2.75             | 69.9  | 35 in.-lb.          | 40°              | 0.090                | 2.29      | 0.550                 | 13.97 | 0.410            | 10.41 |
| 002185*        | 0373 0705 098*  | 3.87             | 98.3  | 50 in.-lb.          | 40°              | 0.090                | 2.29      | 0.582                 | 14.78 | 0.410            | 10.41 |
| 002233**       | 0373 0706 098** | 3.89             | 98.3  | 60 in.-lb.          | 40°              | 0.090                | 2.29      | 1.520                 | 38.61 | 0.375            | 9.53  |
| 002233-001**   | 0373 0701 155** | 6.12             | 155.5 | 60 in.-lb.          | 40°              | 0.090                | 2.29      | 1.520                 | 38.61 | 0.375            | 9.53  |

Note: Call for a complete list of sizes and materials.  
 \*Hardware not included  
 \*\*Full Kit



## V-Coupling

- For small turbochargers, EGR systems and exhaust connections
- Two V-retainers connected with a hinge for easy installation
- Weld-free construction enhances corrosion resistance
- Corrosion/heat resistant steels
- Diameter Range 2"-7"
- 6mm Fasteners

Call our sales team to find the part number that fits your application requirements.