

# FGR COMBI-GRIP E

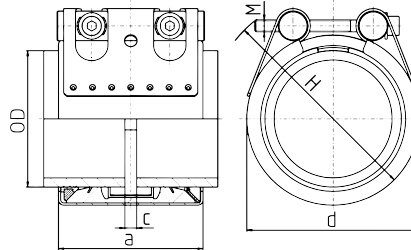


Economical axial restraint coupling for connecting metal pipes with plastic pipes.

Flat and Conically Stamped Teeth | Double-Lip Sealing System | Optional Support Sleeve\* | Hollow Trunnions | Diameter Range 39mm – 170mm

**COMBI-GRIP E (W5)**

- 316 Stainless Steel Inner Ring (EPDM/NBR)
- Heavy-Duty Lock Bars
- One-Side of Flat Teeth (For Plastic)
- One-Side of Conically Stamped Teeth (For Metal)



COMBI-GRIP E (W5) INCHES		PN <sup>1</sup>		WP <sup>2</sup>		O.D. Metal Side	O.D. Plastic Side	c (max)	Dimensions			Clamping Range			
NBR	EPDM	[bar]	psi	[bar]	psi	inches	inches	inches	a	d	H	Plastic (in.)		Metal (in.)	
									inches	inches	inches	min	max	min	max
0584 8660 042	0584 9360 042	10	145	16	232	1 11/16	1 9/16	5/16	2 7/16	2 9/16	3 5/16	1 9/16	1 11/16	1 5/8	1 11/16
0584 8660 048	0584 9360 048	10	145	16	232	1 7/8	2	5/16	2 7/16	2 3/4	3 9/16	1 15/16	2	1 7/8	2
0584 8660 060	0584 9360 060	10	145	16	232	2 3/8	2.5	5/16	3 1/16	3 5/16	4 1/8	2 7/16	2 1/2	2 5/16	2 3/8
0584 8660 076	0584 9360 076	10	145	16	232	3	3	1	3 7/8	3 15/16	4 3/4	2 15/16	3	2 15/16	3
0584 8660 088	0584 9360 088	10	145	16	232	3 1/2	3 1/2	1	3 7/8	4 5/16	5 1/8	3 1/2	3 9/16	3 7/16	3 9/16
0584 8660 114	0584 9360 114	10	145	16	232	4 1/2	4 1/2	1	3 7/8	5 5/16	6 1/8	4 7/16	4 9/16	4 7/16	4 9/16
0584 8660 139	0584 9360 139	10	145	16	232	5 1/2	5 1/2	1 3/8	4 1/2	6 5/16	7 1/16	5 1/2	5 9/16	5 7/16	5 5/8
0584 8660 168	0584 9360 168	10	145	16	232	6 5/8	6 5/8	1 3/8	4 1/2	7 1/2	8.3	6 9/16	6 11/16	6 9/16	6 11/16

COMBI-GRIP E (W5) METRIC		PN <sup>1</sup>		WP <sup>2</sup>		O.D. Metal Side	O.D. Plastic Side	c (max)	Dimensions			Clamping Range			
NBR	EPDM	[bar]	psi	[bar]	psi	mm	mm	mm	a	d	H	Plastic (mm)		Metal (mm)	
									mm	mm	mm	min	max	min	max
0584 8660 042	0584 9360 042	10	145	16	232	42	40	8	62	65	85	39	40	41	43
0584 8660 048	0584 9360 048	10	145	16	232	48	50	8	62	70	90	49	50	47	50
0584 8660 060	0584 9360 060	10	145	16	232	60	63	17	78	85	105	62	63	59	61
0584 8660 076	0584 9360 076	10	145	16	232	76	75	25	98	100	120	74	75	75	77
0584 8660 088	0584 9360 088	10	145	16	232	88	90	25	98	110	130	89	91	87	90
0584 8660 114	0584 9360 114	10	145	16	232	114	114	25	98	135	155	113	115	113	115
0584 8660 139	0584 9360 139	10	145	16	232	139	140	35	115	160	180	139	141	138	143
0584 8660 168	0584 9360 168	10	145	16	232	168	168	35	115	190	210	166	170	166	170

Note: Call for a complete list of sizes and materials.

<sup>1</sup> Nominal Pressure is the maximum admissible working pressure in shipbuilding, based on a safety factor of ≥ 4.

<sup>2</sup> Working Pressure is the maximum admissible working pressure in industrial applications, as per NORMA specification.

Available in these materials:

W1	W2	W3	W4	W5
				X



\*When joining plastic pipes made from PE and PP, a support sleeve must be used. If the pipes to be joined are made from soft thermoplastic material (e.g., PE) the use of a support sleeve is mandatory. The support sleeve is inserted into the pipe end within the area to be joined and thus protects the pipe from being deformed.