

FGR GRIP E

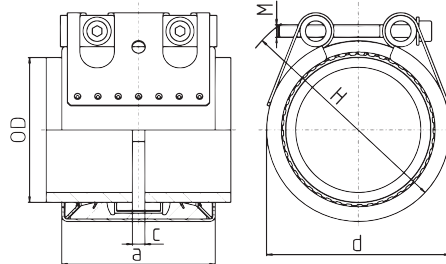


Double-lipped axial restraint pipe coupling with conically stamped teeth for metal pipes.

Conically Stamped Teeth | Double-Lip Sealing System | Hollow Trunnions | Diameter Range 26mm – 613mm

GRIP E (W4)

- 316 Stainless Steel Inner Ring (EPDM/NBR)
- Heavy-Duty Lock Bars
- 304 Stainless Steel Housing



GRIP E (W4)		PN ¹		WP ²		O.D.	c (max)	Dimensions			Clamping Range			
NBR	EPDM	[bar]	psi	[bar]	psi			a	d	H	inches		mm	
						mm	mm	mm	mm	mm	min	max	min	max
0579 8500 026	0579 9200 026	16	232	70	1015	27	3	67	560	70	1	1 1/16	26	28
0579 8500 033	0579 9200 033	16	232	60	870	34	3	67	55	75	1 5/16	1 3/8	33	34
0579 8500 042	0579 9200 042	16	232	50	725	42	8	63	65	85	1 11/16	1 13/16	42	43
0579 8500 048	0579 9200 048	16	232	50	725	48	8	63	70	90	1 7/8	2	48	51
0579 8500 054	0579 9200 054	16	232	50	725	54	17	78	75	95	2 1/8	2 3/16	53	55
0579 8500 057	0579 9200 057	16	232	50	725	57	17	78	80	100	2 3/16	2 1/4	56	58
0579 8500 060	0579 9200 060	16	232	40	580	60	17	78	85	105	2 5/16	2 3/8	60	61
0579 8500 073	0579 9200 073	16	232	40	580	73	25	98	95	115	2 13/16	2 15/16	72	74
0579 8500 076	0579 9200 076	16	232	35	508	76	25	98	100	120	2 7/8	3	75	77
0579 8500 088	0579 9200 088	16	232	35	508	89	25	98	110	130	3 7/16	3 9/16	87	90
0579 8500 108	0579 9200 108	16	232	35	508	108	25	98	130	150	4 3/16	4 5/16	107	109
0579 8500 114	0579 9200 114	16	232	35	508	114	25	98	135	155	4 7/16	4 9/16	113	116
0579 8500 139	0579 9200 139	16	232	32	464	140	35	115	165	195	5 7/16	5 9/16	138	142
0579 8500 154	0579 9200 154	16	232	32	464	154	35	115	180	210	6	6 1/8	152	156
0579 8500 168	0579 9200 168	16	232	32	464	168	35	115	195	225	6 5/8	6 3/4	167	170
0574 8500 219	0574 9200 219	10	145	20	290	219	35	141	250	280	8 1/2	8 11/16	216	221
0574 8500 273	0574 9200 273	5.5	79	13	188	273	35	140	305	335	10 5/8	10 13/16	270	275
0574 8500 306	0574 9200 306	5.5	79	10.5	152	306	35	140	340	370	11 7/8	12 1/8	302	308
0574 8500 323	0574 9200 323	3	43	9.5	137	324	35	140	355	385	12 5/8	12 7/8	320	327
0574 8500 355	0574 9200 355	2.7	39	8.5	123	355	35	140	390	420	13 27/32	14 1/8	352	359
0574 8500 429	0574 9200 429	2.5	36	6.5	94	429	35	140	460	490	16 25/32	16 31/32	426	431
0574 8500 457	0574 9200 457	2.5	36	6.0	87	457	35	140	490	520	17 7/8	18 1/16	454	459
0574 8500 531	0574 9200 531	1.5	22	4.0	58	531	35	140	565	595	20 25/32	21	528	534
0574 8500 609	0574 9200 609	1	15	2.0	29	609	35	140	640	670	23 27/32	24 1/8	606	613

Note: Call for a complete list of sizes and materials.

¹ Nominal Pressure is the maximum admissible working pressure in shipbuilding, based on a safety factor of ≥ 4.

² Working Pressure is the maximum admissible working pressure in industrial applications, as per NORMA specification.

Available in these materials:

W1	W2	W3	W4	W5
	X		X	X