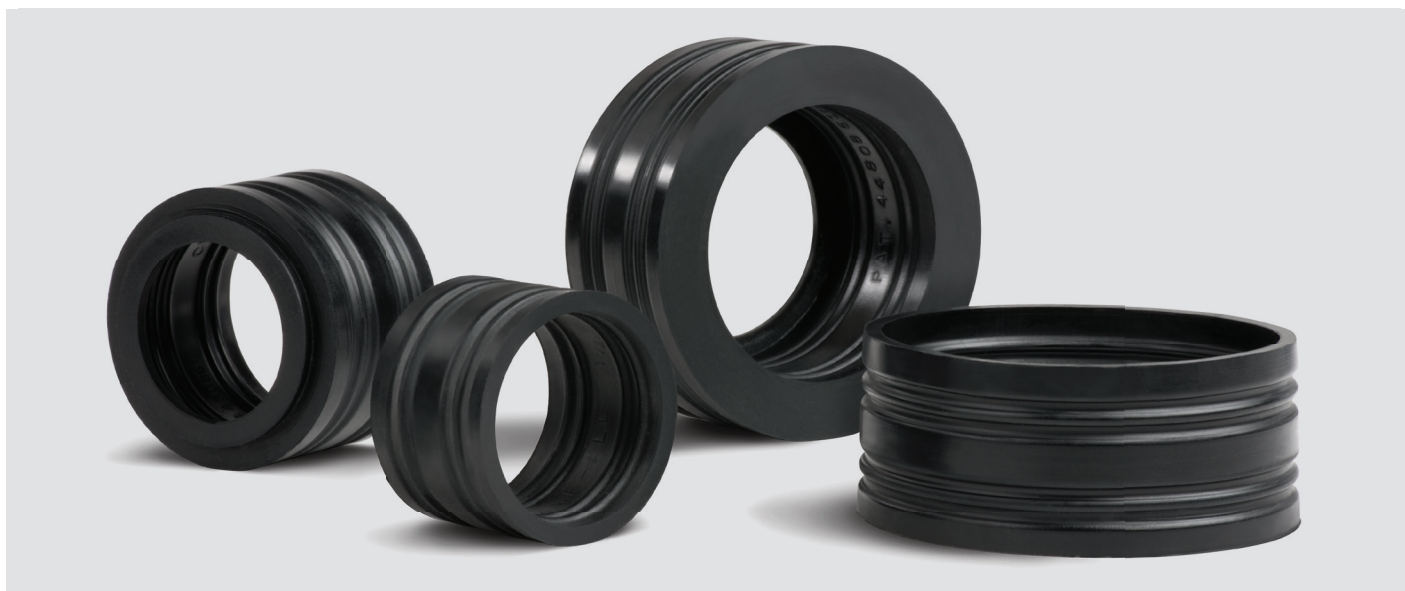
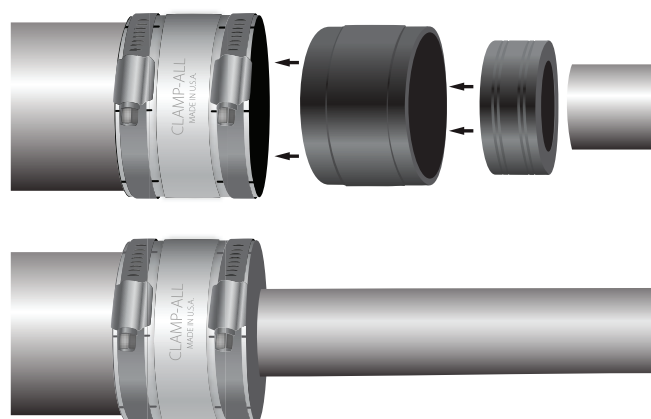


SNAP-ALL[®] Transition Bushings



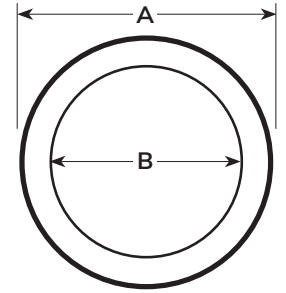
Snap-All Transition Bushings from Clamp-All connect pipes of different diameters or materials in drain, waste, and vent (DWV) applications.

- ✓ Snap-All bushings are convenient: use them on one side or both sides of the coupling, for permanent or emergency installations.
- ✓ The outer grooves of the bushing nest into the HI-TORQ coupling gaskets or to other Snap-All bushings to provide an interlocking water-tight, gas-tight seal.
- ✓ Bushings are one-piece molded neoprene, the same high-quality material used for HI-TORQ coupling gaskets.
- ✓ Snap-All bushings are used to increase/reduce for pipe connections of different diameters and materials. From 6" hubless cast iron, plastic, or steel pipe to 1¹/₄" copper, every transition is easily made simply by nesting one size bushing into a coupling gasket or another bushing.
- ✓ Snap-All's unique design allows it to be used with either the Clamp-All HI-TORQ 80 or HI-TORQ 125 couplings.



Snap-All Transition Bushings Engineering & Ordering Information

Brand Number	Global NORMA Number	Snap-All Bushing Size	A Diameter Fits Inside		B Diameter Fits Outside	
			Clamp-All Coupling	Snap-All Bushing	Pipe Size	Material
31512	03640602038	1½ x 1¼ cu	1½	2 x 1½	1¼	Copper
31515	03640601038	1½ x 1½ cu	1½	2 x 1½	1½	Copper
30215	03640600051	2 x 1½ cu	2	3 x 2	1½	Copper
20215	03640602051	2 x 1½	2	3 x 2	1½	CI, STL, PVC
30022	03640601051	2 x 2 cu	2	3 x 2	2	Copper, XHCl
30032	03640604076	3 x 2 cu	3	4 x 3	2	Copper
20032	03640602076	3 x 2	3	4 x 3	2	CI, STL, PVC
30033	03640601076	3 x 3 cu	3	4 x 3	3	Copper, XHCl
30043	03640601102	4 x 3 cu	4	5 x 4	3	Copper
20043	03640602102	4 x 3	4	5 x 4	3	CI, STL, PVC
30044	03640600102	4 x 4 cu	4	5 x 4	4	Copper, XHCl
20065	03640601152	6 x 5	6	8 x 6	5	CI, STL, PVC



Nominal Outside Pipe Diameter						
Pipe Size	Hubless Cast Iron	Steel	Schedule 40-80 PVC	SDR-35 Plastic	Clay	Copper DWV
1¼	-	-	-	-	-	1.375
1½	1.90	1.90	1.90	-	-	1.625
2	2.35	2.38	2.38	-	-	2.125
3	3.35	3.38	3.38	-	-	3.125
4	4.38	4.50	4.50	4.215	5.37	4.125
5	5.30	5.56	5.56	-	6.65	5.125
6	6.30	6.63	6.63	6.28	7.50	6.125
8	8.38	8.63	8.63	8.40	-	-
10	10.56	10.75	10.75	10.50	-	-

Note: All sizes in the charts are in nominal inches.

Snap-All bushings conform strictly to ASTM C 564.

For information, technical support or to order:

NORMA Michigan, Inc.
 325 W. Silverbell Rd. Suite 230 • Lake Orion, MI 48359
 TOLL FREE: 855-NORMA2U (667-6228)
 FAX: 855-804-4646 • www.normaamericasds.com
 E-mail: norma2u@normagroup.com



This document supersedes all previous issues. No part of this publication may be reproduced without our prior written consent. In NORMA Group's policy of continual product improvements to meet user needs and technological developments, all models and sets listed in this folder (photographs, specifications, sizes and weights) may be upgraded or discontinued without notice and without any obligation on our part to modify tools or equipment sold previously. The recommendations for use and safety given in this folder do not replace accepted good practice or the safety related legal and regulatory provisions. References to standards implemented as of February 27, 2023 are not contractually binding.