

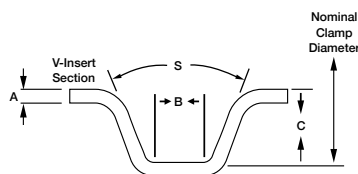
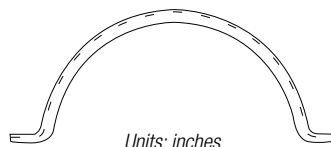
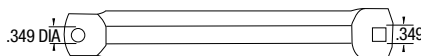


# V-Clamp Halves

Two separate V-retainers with two bolts, develops a more uniform clamping load than a single-bolt clamp.

**Weld-Free Construction** | Diameter Range 2.51" – 6.12"

- V-CLAMP HALVES**
- #10, 1.4", 5/16" 3/8" Fasteners
- 300-Series SS Insert
- 410 Stainless Steel Hardware



V-CLAMP HALVES		Nominal Diameter		Installation Torque	Insert Angle (S)	Insert Thickness (A)		Insert Apex Width (B)		Insert Depth (C)	
Brand PN	Global PN	in	mm			in	mm	in	mm	in	mm
002081	0373 0701 064	2.51	63.8	40 in.-lb.	42°	0.081/0.073	2.06/1.85	0.412	10.46	0.235	5.97
002081-001	0373 0701 100	3.93	99.8	40 in.-lb.	42°	0.081/0.073	2.06/1.85	0.412	10.46	0.235	5.97
002104*	0373 0702 070*	2.75	69.9	35 in.-lb.	40°	0.090	2.29	0.550	13.97	0.410	10.41
002185*	0373 0705 098*	3.87	98.3	50 in.-lb.	40°	0.090	2.29	0.582	14.78	0.410	10.41
002233**	0373 0706 098**	3.89	98.3	60 in.-lb.	40°	0.090	2.29	1.520	38.61	0.375	9.53
002233-001**	0373 0701 155**	6.12	155.5	60 in.-lb.	40°	0.090	2.29	1.520	38.61	0.375	9.53

Note: Call for a complete list of sizes and materials.

\*Hardware not included

\*\*Full Kit

## V-Coupling

- For small turbochargers, EGR systems and exhaust connections
- Two V-retainers connected with a hinge for easy installation
- Weld-free construction enhances corrosion resistance
- Corrosion-/heat-resistant steels
- Diameter Range 2"-7"
- 6mm Fasteners

Call our sales team to find the part number that fits your application requirements.

