

FGR REP E

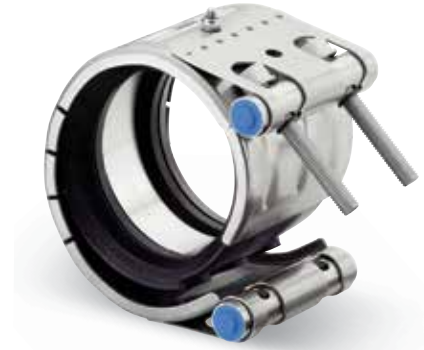
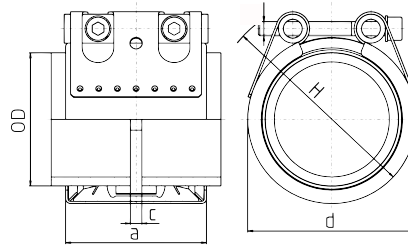


Repair coupling for axial non-restraint couplings to stop leakages at metal or plastic pipes.

Standard Strip Insert and Protection Ring | Double-Lip Sealing System | Hollow Trunnions | Diameter Range 44mm – 1222mm

REP E (W5)

- 316 Stainless Steel Inner Ring (EPDM/NBR)
- Heavy-Duty Lock Bars
- 316 Stainless Steel Housing



REP E (W5)		WP ¹		O.D.	c (max)	Dimensions			Clamping Range			
NBR	EPDM	[bar]	psi			a	d	H	inches		mm	
				mm	mm	mm	mm	mm	min	max	min	max
0572 8660 044	0572 9360 044	50	725	45	8	63	65	85	1 5/16	1 3/8	44	45
0572 8660 048	0572 9360 048	50	725	48	8	63	70	90	1 7/8	2	48	51
0572 8660 060	0572 9360 060	40	580	60	17	78	85	105	2 5/16	2 3/8	60	61
0572 8660 073	0572 9360 073	40	580	73	25	98	95	115	2 3/8	2 5/16	72	74
0572 8660 076	0572 9360 076	35	508	76	25	98	100	120	2 7/8	3	75	77
0572 8660 088	0572 9360 088	35	508	89	25	98	110	130	3 7/16	3 9/16	87	90
0572 8660 101	0572 9360 101	35	508	102	25	98	125	145	2 15/16	2 1/16	100	103
0572 8660 114	0572 9360 114	35	508	114	25	98	135	155	4 7/16	4 9/16	113	116
0572 8660 139	0572 9360 139	32	464	134	35	113	165	195	5 7/16	5 9/16	138	142
0572 8660 141	0572 9360 141	32	464	142	35	113	170	200	5 1/2	5 5/8	140	143
0572 8660 168	0572 9360 168	32	464	168	35	113	195	225	6 5/8	6 3/4	167	170
0576 8660 219	0576 9360 219	23	333	219	35	139	250	280	8 1/2	8 11/16	216	221
0576 8660 229	0576 9360 229	23	333	229	35	139	260	290	9	9 1/8	228	232
0576 8660 273	0576 9360 273	20	290	273	35	139	305	335	10 5/8	10 13/16	270	275
0576 8660 306	0576 9360 306	17.5	253	306	35	139	340	370	11 7/8	12 1/8	302	308
0576 8660 355	0576 9360 355	15	217	355	35	139	390	420	11 7/8	14 1/8	352	359
0576 8660 457	0576 9360 457	12	174	457	35	139	490	520	17 7/8	18 1/16	454	459
0576 8660 558	0576 9360 558	10	145	558	35	139	590	620	21 7/8	22 1/8	556	562
0576 8660 711	0576 9360 711	7	101	711	35	139	745	775	27 13/16	28 1/8	707	715
0576 8660 914	0576 9360 914	5.5	79	914	35	139	945	975	35 13/16	36 3/16	909	919
0576 8660 1117	0576 9360 1117	4.5	65	1117	35	139	1150	1180	43 7/8	44 1/8	1114	1120
0576 8660 1219	0576 9360 1219	4	58	1219	35	139	1250	1280	47 7/8	48 1/8	1216	1222

Note: Call for a complete list of sizes and materials.

¹ Working Pressure is the maximum admissible working pressure in industrial applications, as per NORMA specification.

Available in these materials:

W1	W2	W3	W4	W5
				X