

FGR FLEX E

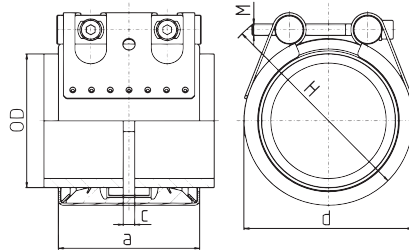


Used for axial non-restraint connections for metal, concrete and plastic pipes.

Standard Strip Insert and Protection Ring | Double-Lip Sealing System | Hollow Trunnions | Diameter Range 33mm – 1222mm

FLEX E (W4)

- 316 Stainless Steel Inner Ring (EPDM/NBR)
- Heavy-Duty Lock Bars
- 304 Stainless Steel Housing



FLEX E (W4)		PN ¹		WP ²		O.D.	c (max)	Dimensions			Clamping Range			
		[bar]	psi	[bar]	psi			a	d	H	inches		mm	
NBR	EPDM					mm	mm	mm	mm	mm	min	max	min	max
0582 8500 033	0582 9200 033	16	232	60	870	34	3	67	55	75	1 5/16	1 3/8	33	34
0582 8500 048	0582 9200 048	16	232	50	725	48	8	63	70	90	1 7/8	2	48	51
0582 8500 060	0582 9200 060	16	232	40	580	60	17	78	85	105	2 3/8	2 3/8	60	61
0582 9200 073	0582 9200 073	16	232	40	580	73	25	98	95	115	2 13/16	2 15/16	72	74
0582 8500 076	0582 9200 076	16	232	35	508	76	25	98	100	120	2 15/16	3 1/16	75	77
0582 8500 088	0582 9200 088	16	232	35	508	89	25	98	110	130	3 7/16	3 9/16	87	90
0582 8500 114	0582 9200 114	16	232	35	508	114	25	98	135	155	4 7/16	4 9/16	113	116
0582 8500 139	0582 9200 139	16	232	32	464	140	35	113	165	195	5 7/16	5 9/16	138	142
0582 8500 168	0582 9200 168	16	232	32	464	168	35	113	195	225	6 9/16	6 11/16	167	170
0583 8520 219	0583 9200 219	13.5	195	23	333	219	35	139	250	280	8 1/2	8 11/16	216	221
0583 8520 229	0583 9200 229	12	174	23	333	229	35	139	260	290	9	9 1/8	228	232
0583 8520 273	0583 9200 273	12	174	20	290	273	35	139	305	335	10 5/8	10 13/16	270	275
0583 8520 306	0583 9200 306	9	130	17.5	253	306	35	139	340	370	11 7/8	12 1/8	302	308
0583 8520 355	0583 9200 355	9	130	15	217	355	35	139	390	420	11 7/8	14 1/8	352	359
0583 8520 457	0583 9200 457	5.5	79	12	174	457	35	139	490	520	17 7/8	18 1/16	454	459
0583 8520 558	0583 9200 558	5.5	79	10	145	558	35	139	590	620	21 7/8	22 1/8	556	562
0583 8520 711	0583 9200 711	4	58	7	101	711	35	139	745	775	27 13/16	28 1/8	707	715
0583 8520 914	0583 9200 914	2	29	5.5	79	914	35	139	945	1035	35 13/16	36 3/16	909	919
0583 8520 1117	0583 9200 1117	2	29	4.5	65	1117	35	139	1150	1240	43 7/8	44 1/8	1114	1120
0583 8520 1219	0583 9200 1219	2	29	4	58	1219	35	139	1250	1340	47 7/8	48 1/8	1216	1222

Note: Call for a complete list of sizes and materials.

¹ Nominal Pressure is the maximum admissible working pressure in shipbuilding, based on a safety factor of ≥ 4 .

² Working Pressure is the maximum admissible working pressure in industrial applications, as per NORMA specification.

Available in these materials:

W1	W2	W3	W4	W5
	X		X	X